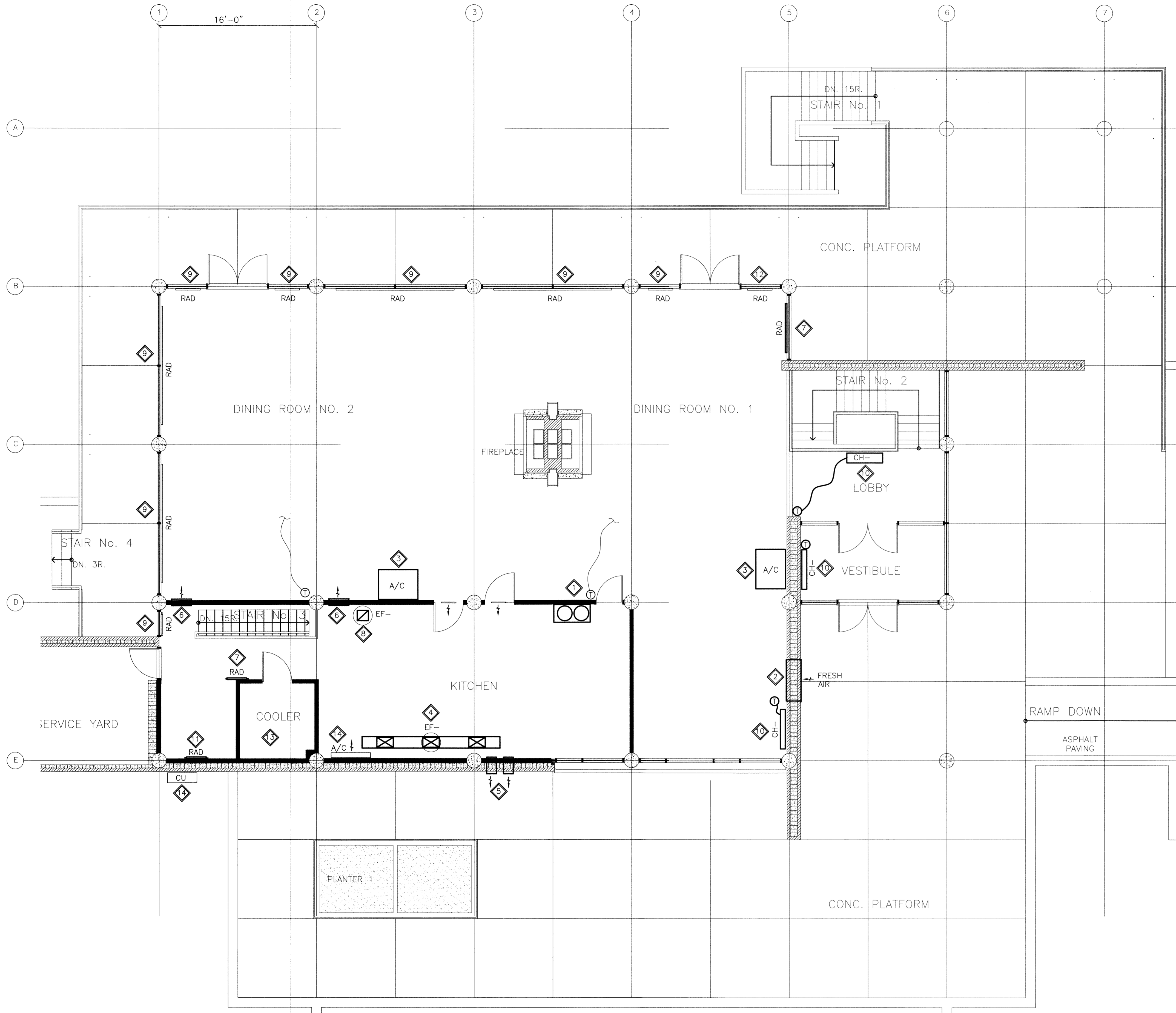


File Name: P:\Projects\11-0902-04\_M6.0-Rev 0.dwg - Tab: 24x36-11-0902-04M6.0-Rev 0.dwg - Tab: 24x36-11-0902-04M6.0-Rev 0.dwg - Tab: 24x36-11-0902-04M6.0-Rev 0.dwg - Tab: 24x36-11-0902-04M6.0-Rev 0.dwg  
 24x36-11-0902-04M6.0-Rev 0.dwg - Tab: 24x36-11-0902-04M6.0-Rev 0.dwg - Tab: 24x36-11-0902-04M6.0-Rev 0.dwg - Tab: 24x36-11-0902-04M6.0-Rev 0.dwg  
 Scale: 1:1



**1** MAIN FLOOR PLAN - HVAC  
 SCALE: 3/16"=1'-0" (24" X 36")  
 N.T.S. (11" X 17")

**GENERAL NOTES:**

- PERFORM WORK IN ACCORDANCE WITH ALL APPLICABLE CODES AND REGULATIONS.
- REVIEW EQUIPMENT LOCATIONS WITH CONSULTANT PRIOR TO INSTALLATION.
- EQUIPMENT LOCATIONS, DUCT AND PIPE ROUTING INDICATED ON THE DRAWINGS IS APPROXIMATE ONLY. CONFIRM IN THE FIELD. REROUTE DUCTWORK AND PIPING AS REQUIRED TO ELIMINATE FIELD INTERFERENCES, WITH BUILDING STRUCTURES, ELECTRICAL, ETC.. CONFIRM CHANGES WITH CONSULTANT. CO-ORDINATE WORK WITH ALL SUBTRADES. WHERE DIMENSIONS ARE INDICATED FOR PIPING, DUCTWORK, DUCT SIZES, EQUIPMENT SIZES, ETC. THESE ARE FOR BIDDING PURPOSES ONLY. THE CONTRACTOR IS RESPONSIBLE TO VERIFY ALL DIMENSIONS IN THE FIELD PRIOR TO ORDERING EQUIPMENT AND COMMENCING INSTALLATION WITHOUT EXTRA CHARGES TO THE PROJECT. THE CONTRACTOR IS RESPONSIBLE TO ENSURE ALL EQUIPMENT, DUCTWORK AND PIPING FITS IN THE SPACE AVAILABLE AND TO MAINTAIN THE GENERAL DESIGN INTENT FOR THE SYSTEMS.
- CONFORM TO SMACNA STANDARDS FOR SUPPLY AND INSTALLATION OF DUCTWORK.
- SEAL ALL WALL AND ROOF PENETRATIONS AND DUCTWORK WATER AND AIR TIGHT.
- PROVIDE ALL WALL AND ROOF PENETRATIONS AND CURBS.
- ALL NEW AND MODIFIED EXPOSED DUCTWORK SHALL BE PAINTED AS PER INTERIOR DESIGNER'S INSTRUCTIONS.

**KEY NOTES:**

- REMOVE CHIMNEY STACKS FROM EXISTING BOILER AND MAKEUP AIR UNIT. CHIMNEY STACK ON ROOFTOP TO BE REMOVED, CO-ORDINATE WITH STRUCTURAL. SEAL ROOF PENETRATION WATER AND AIR TIGHT AND MAKE GOOD. REMOVE DUCT CHASE.
- REMOVE EXISTING FRESH AIR SUPPLY DUCTWORK AND ASSOCIATED LOUVER. PATCH OPENINGS AND MAKE GOOD. SEAL WALL PENETRATION WATER AND AIR TIGHT. RETAIN RECESSED OPENING FOR NEW HEATER AS PER DRAWING M8.0
- REMOVE EXISTING WATER COOLED AIR CONDITIONER AND ASSOCIATED CONTROLS. DISCONNECT AND REMOVE DOMESTIC WATER LINES UP TO MAIN BRANCH AND CAP. PATCH FLOOR TO MATCH EXISTING AND MAKE GOOD.
- REMOVE EXISTING ROOFTOP KITCHEN EXHAUST FAN AND ASSOCIATED DUCTWORK AND RANGE HOOD. EXISTING EXHAUST FAN AND DUCTWORK TO BE REPLACED WITH NEW EXHAUST FAN AS SHOWN ON DWG. M8.0.
- REMOVE EXISTING STAFF WASHROOM EXHAUST FANS AND ASSOCIATED DUCTWORK. PATCH OPENINGS AND MAKE GOOD. SEAL OUTDOOR WALL PENETRATIONS WATER AND AIR TIGHT.
- REMOVE EXISTING SUPPLY AIR GRILLE. CAP DUCTWORK AND LEAVE IN PLACE. PATCH WALL PENETRATION AND MAKE GOOD.
- REMOVE EXISTING RADIATOR. DISCONNECT AND REMOVE HYDRONIC LINES UP TO MAIN BRANCH AND CAP. PATCH FLOOR AND BASEMENT CEILING TO MATCH EXISTING.
- REMOVE EXISTING ROOFTOP EXHAUST FAN FOR DISHWASHER AND ASSOCIATED DUCTWORK. EXISTING ROOF PENETRATION TO BE USED FOR NEW EXHAUST DUCTWORK.
- REMOVE EXISTING RADIATOR COVERS. RADIATOR ELEMENTS TO REMAIN. RADIATOR COVERS ARE TO BE REPLACED WITH NEW COVERS AS PER DRAWING M10.0. CLEAN RADIATOR FINS AND CONFIRM RADIATORS ARE IN GOOD WORKING ORDER. IF NOT, PROVIDE PRICING FOR REPLACEMENT.
- REMOVE EXISTING CABINET HEATER. DISCONNECT AND REMOVE HYDRONIC LINES UP TO MAIN BRANCH AND CAP. PATCH FLOOR AND BASEMENT CEILING TO MATCH EXISTING AND MAKE GOOD. REMOVE ASSOCIATED THERMOSTATS.
- REMOVE EXISTING RADIATOR AS INDICATED. EXISTING RADIATOR TO BE REPLACED AS PER DRAWING M10.0.
- REMOVE EXISTING RADIATOR COVER. RADIATOR ELEMENT TO REMAIN. RADIATOR COVER IS TO BE REPLACED WITH NEW COVER AS PER DRAWING M10.0. CLEAN RADIATOR FINS AND CONFIRM RADIATORS ARE IN GOOD WORKING ORDER. IF NOT, PROVIDE PRICING FOR REPLACEMENT. DISCONNECT HYDRONIC PIPING FROM ADJACENT RADIATOR IN SERIES TO BE DEMOLISHED, PROVIDE NEW RETURN PIPING AND FLOOR PENETRATION TO RUN HYDRONIC LINE BACK AND CONNECT TO MAIN BRANCH.
- EXISTING COOLER AND ASSOCIATED REFRIGERANT EQUIPMENT TO REMAIN.
- EXISTING SPLIT SYSTEM AIR CONDITIONER AND OUTDOOR CONDENSING UNIT TO REMAIN. CLEAN FILTERS AND CONFIRM IF IT IS IN GOOD WORKING ORDER IF NOT, PROVIDE PRICE TO REMOVE.

**LEGEND:**

- EXISTING EQUIPMENT OR DUCTWORK TO BE REMOVED
- EXISTING EQUIPMENT OR DUCTWORK TO REMAIN
- RAD RADIATOR
- CH- CABINET HEATER
- EF- EXHAUST FAN
- CU CONDENSING UNIT
- A/C AIR CONDITIONER
- T THERMOSTAT

**REVISIONS:**

NO.	DATE	DESCRIPTION
Rev. 0 - ISSUED FOR TENDER	NOVEMBER 21/2011	

SCALE VERIFIED BY: *[Signature]*

**numberTEN**  
 architectural group  
 winnipeg MB regina SK victoria BC  
 204 942.0981 306 721.1501 250 360.2106  
 architecture • interior design • graphic design

**PEGUIS PAVILION**  
 UPGRADES & ENTRY ADDITION  
 BIDDING #913-2011

project  
 MAIN FLOOR PLAN  
 HVAC - DEMOLITION

sheet title  
**KGS GROUP** | CONSULTING ENGINEERS

consultant  
**PEGN**  
 Certificate of Authorization  
 KGS Group  
 No. 245

PROVINCE OF MANITOBA  
**R.B. BODNAR**  
 REGISTERED PROFESSIONAL ENGINEER  
 No. 245

scale: 3/16"=1'-0"  
 date: November 17, 2011  
 drawn by: VJH  
 checked by: RBB  
 project no. 2011026  
 sheet no. M6.0